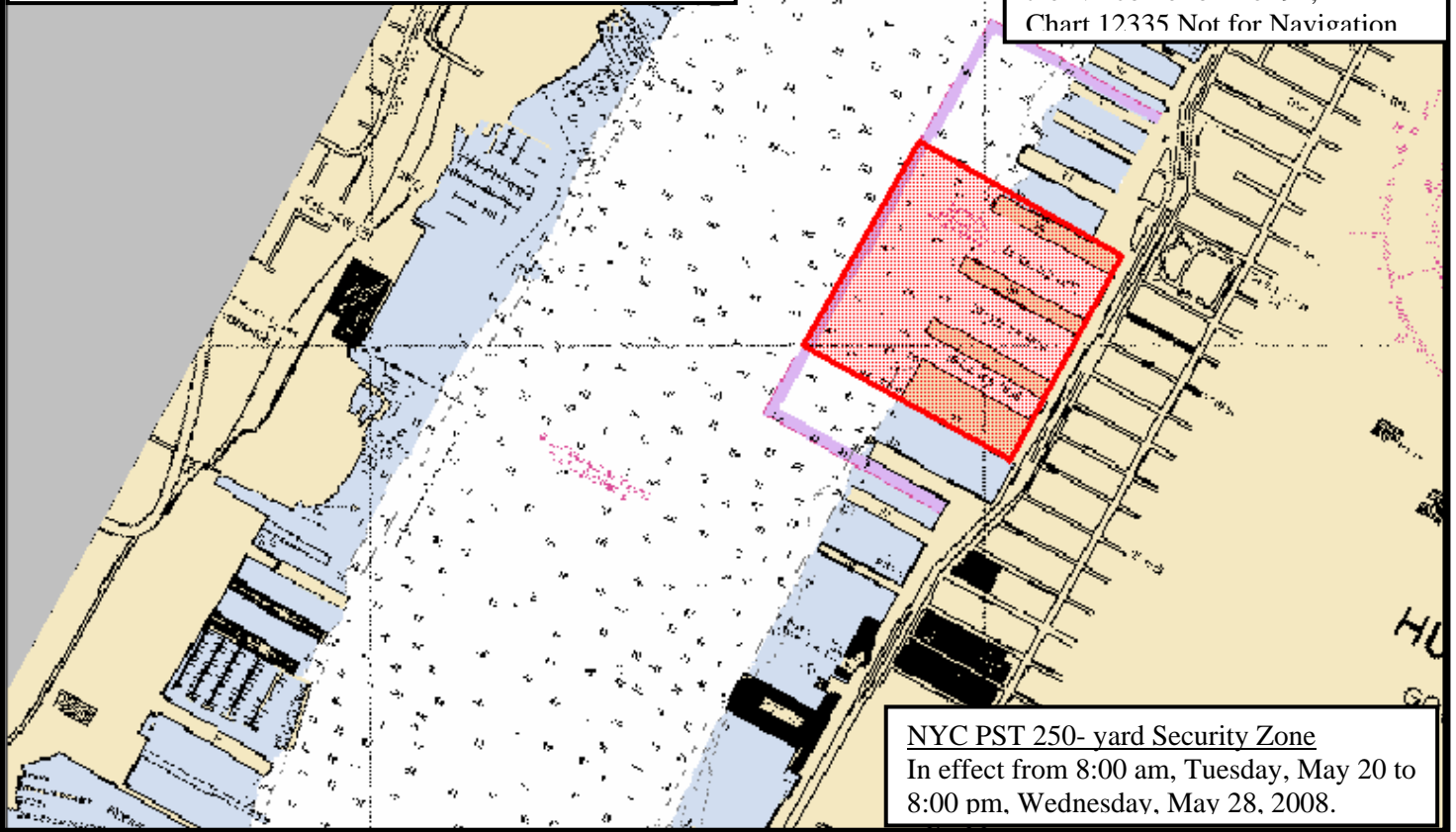


Entry into, or movement within this zone, is prohibited without the authorization of the Coast Guard Captain of the Port or his designated on-scene representative. Persons violating this regulation are subject to a penalty of up to \$50,000 and/or imprisonment for not more than 5 years.

NYC PST 250-yard Security Zone
SE corner of Pier 86, to
40°46'00.0"N, 074°00'17.8"W, to
40°46'15.1"N, 074°00'06.4"W, to
the NE corner of Pier 92,
Chart 12335 Not for Navigation



NYC PST 250- yard Security Zone
In effect from 8:00 am, Tuesday, May 20 to
8:00 pm, Wednesday, May 28, 2008.

M. T. McBRADY
Lieutenant Commander, U.S. Coast Guard
Chief, Waterways Management Division
By direction

The USCG continues to be on a heightened state of alert, consistent with the current Homeland Security threat level and the normally high level of waterways usage in this critical operating area. We are taking appropriate measures consistent with the existing safety and security posture. The USCG is working with DHS, DOT, the FBI, and other security/law enforcement agencies to ensure the security of ports, waterways, coasts and facilities. You are encouraged to continue close cooperation and coordination of necessary safety/security efforts with your local/state law enforcement agencies. Report any suspicious activity to the Coast Guard via marine radio or via our 24-hour watch at (718) 354-4353 or (718) 354-4356.